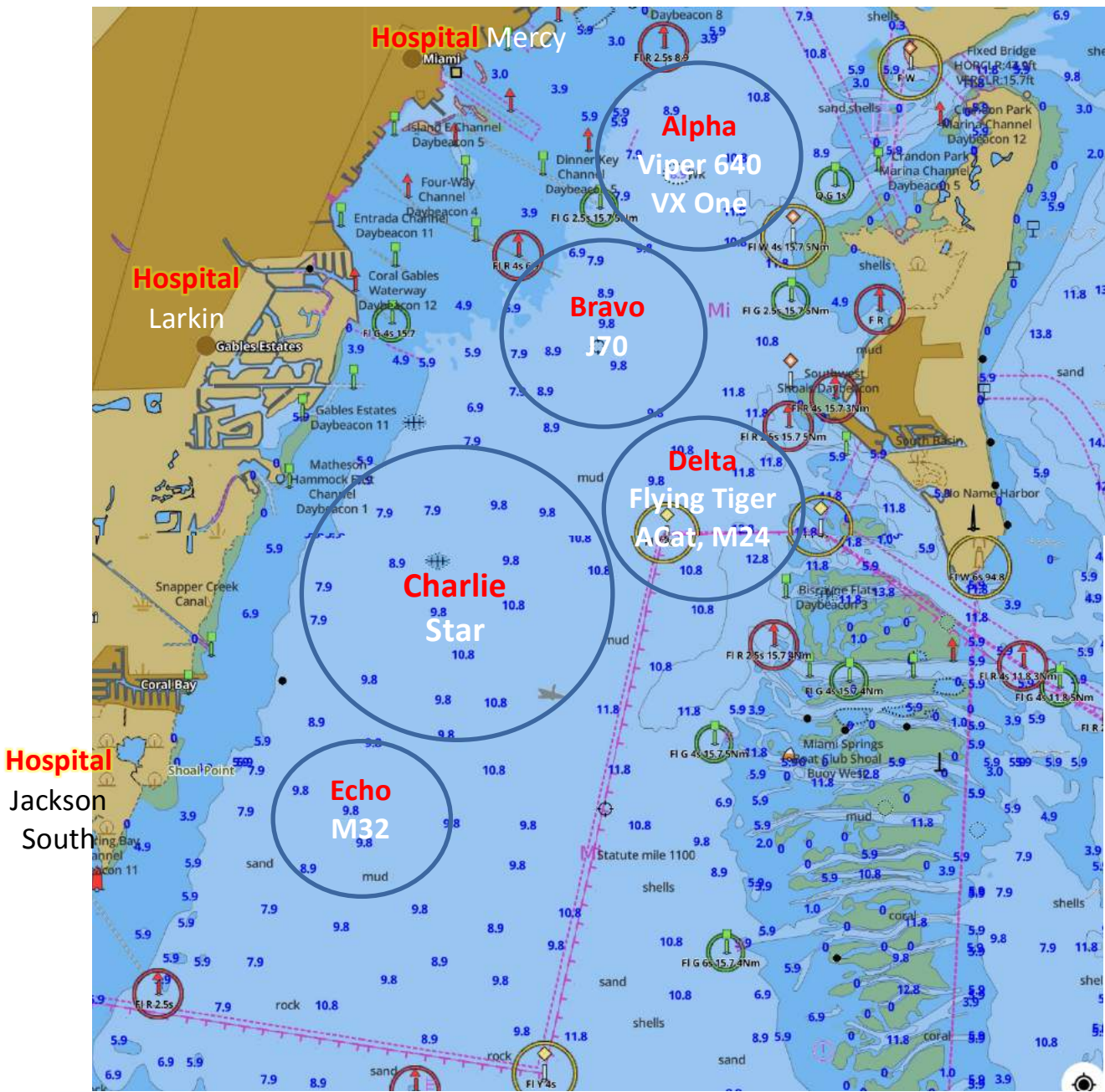


## 2017 Race Circles



Circle	Fleets	Diameter	Center	VHF
Alpha	Viper, VX One	1.5 nm	25 43.02 80 11.70	73
Bravo	J70	1.5 nm	25 41.90 80 12.52	72
Charlie	Star	2.0 nm	25 39.65 80 13.98	71
Delta	ACat, Melges 24, Flying Tigers	1.5 nm	25 40.55 80 11.63	69
Echo	M32	0.8 nm	25 38.03 80 15.06	74



## **STAR CLASS 2017 SAILING INSTRUCTIONS**

### **1 Rules:**

- 1.1** The regatta will be governed by the rules as defined in The Racing Rules of Sailing (RRS).
- 1.2** RRS Appendix P will apply. RRS Appendix P is changed to permit the hail to a protested boat to be either sail number or bow number.
- 1.3** The prescriptions of the national authority, US Sailing, do not apply, except as noted in SI 22 below.
- 1.4** STCR 31.2.6 will be amended per SI 23 herein.
- 1.5** Racing rules 29.1, 32.2, 35, 66, 63.1, 63.3, A4.1 and A5 and others will be changed as noted herein.

### **2 Notices to Competitors:**

- 2.1** Notices to competitors will be posted on the official notice board (Notice Board) located in the breezeway adjacent to the Snack Bar at Coral Reef Yacht Club (CRYC).

### **3 Crew Weight:**

- 3.1** ISCYRA rule 31.1.3, Crew Weight, will not be in effect.

### **4 Changes in the Sailing Instructions:**

- 4.1** Changes in the Sailing Instructions (SI) will be approved by the International Jury (Jury) and the Organizing Authority (OA) and will be posted before 0900 hours of the day they will take effect, except that any change in the schedule of races will be posted by 2000 hours on the day before it will take effect.

### **5 Signals Ashore:**

- 5.1** Signals made ashore will be displayed on the flagpole located at Coral Reef Yacht Club.
- 5.2** Code flag "AP" when displayed ashore means that the start has been postponed. The Warning Signal will be made not less than 90 minutes after removal. This changes RRS Race Signals.

### **6 Schedule:**

#### **6.1** Schedule of racing:

Date - Day	Warning Signal
3/6 Monday	1155 - one race scheduled
3/7 Tuesday	1155 - one race scheduled
3/8 Wednesday	1155 - one race scheduled
3/9 Thursday	1155 - one race scheduled
3/10 Friday	1155 - one race scheduled



3/11 Saturday 1055 - one race scheduled – no warning signal made after 1300 hours.

**6.2** The schedule above is subject to change due to weather conditions. Changes will be posted in accordance with SI 4.

### **7 Class Flag:**

**7.1** The class flag will be the ICSYRA flag.

### **8 Racing Area:**

**8.1** The racing area is circle “Charlie” approximately 3 NM to 4 NM south of Dinner Key Channel. See Notice Board for location on chart.

### **9 Courses:**

**9.1** Course “0”, Course “1”, Course “3”, or Course “4”, STCR 34.3, Format A, STCR 34.3.7 may be used.

**9.2** The Race Committee signal boat will display the course number with the distance and approximate magnetic bearing to the Mark 1 prior to or with the Warning Signal.

**9.3** The courses will not be shortened. This changes RRS 32.2.

**9.4** Lengths of legs of the course will not be changed after the Preparatory Signal; this changes RRS 33(b).

### **10 Marks:**

**10.1** Inflatable marks will be used for the course. A description of these marks will be posted on the Notice Board before racing begins.

**10.2** A gate may be employed at Mark 3. Boats shall sail between the gate marks and round either mark.

**10.3** For courses “0” and “1” an offset mark will be set at Mark 1 for all legs.

### **11 Check In:**

**11.1** Prior to the first Warning Signal of each race, boats shall sail past the stern of the Race Committee (RC) signal boat to be recorded. RRS A4.1 is changed to provide that boats not complying with this instruction will receive a score as a boat not starting without a hearing. This changes RRS 63.1 and A5.

### **12 The Start:**

**12.1** The starting line will be between a staff displaying an orange flag on the starboard-end RC signal boat and a staff displaying an orange flag on the port-end RC pin boat.

**12.2** A boat not starting within 10 minutes after the Starting Signal will be scored Did Not Start without a hearing. This changes RRS A4.

**12.3** The recall number for a boat will be her bow number.

**12.4** A RC boat displaying flag “G” may pass to windward of the fleet which means: “The Race Committee has signaled an abandonment, postponement or general recall. Boats are to return to the starting area immediately.”



**12.5** Flag X will be displayed for 10 minutes as well as at the weather mark (see SI 12.6). This changes rule 29.1.

**12.6** A Race Committee boat displaying an “X” flag, a “U” flag, or a black flag positioned near Mark 1 will attempt to notify boats that have been OCS or disqualified in accordance with RRS 30.3 or RRS 30.4 and will display their bow number(s). Any boat notified that she has been disqualified shall leave the race course immediately.

### **13 Changing the Next Leg of the Course:**

**13.1** To change the next leg of the course, the RC will move the original mark(s) (or the finish line) to a new position. The compass bearing to the changed mark(s) will be signaled at the beginning of the leg.

### **14 The Finish:**

**14.1** The finishing line will be between the staff displaying an orange flag on a RC boat at the starboard end and a nearby inflatable mark or the staff displaying an orange flag on a RC boat at the port end.

### **15 Time Limits:**

**15.1** The time limit will be as described in STCR 34.3.7 Format A.

**15.2** RRS 35, A4 and A5 and 63.1 are changed to provide that boats finishing more than 30 minutes after the first boat to finish will be scored “Did Not Finish” without a hearing.

### **16 Protests:**

**16.1** Protest forms are available at the Jury desk inside the main lobby at Coral Reef Yacht Club.

**16.2** Protests must be delivered to the Jury secretary within one hour of the RC signal boat docking time. The protest time will be posted on the Notice Board. The same protest time limit applies to all protests by the RC and Jury about incidents they observe in the racing area and to request redress. This changes RRS 61.3 and 62.2.

**16.3** Notices will be posted on the Notice Board 30 minutes after the protest time limit to inform competitors of hearing in which they are parties or named as witnesses. Hearings will be held at Coral Reef Yacht Club in order received.

**16.4** Boats scored as having not started or not finished will be posted on the Notice Board within 30 minutes before the end of protest time. Any boat may request a scoring inquiry, which must be in writing and delivered to the RC within the protest time limit.

**16.5** On the last day of racing a request for reopening a hearing shall be delivered: Within the protest time limit if the requesting party was informed of the decision on the previous day; or, no later than 30 minutes after the requesting party was informed. This changes RRS 66.

**16.6** On the last day of racing a request for redress based on a Jury decision shall be delivered no later than 30 minutes after the decision was posted. This changes RRS 62.2



### **17 Scoring:**

**17.1** The Low Point System will be used except, when four (4) or more races have been completed, a boats series score will be the total of her race scores excluding her worst score. This changes RRS A2.1.

**17.2** Six races are scheduled. Three completed races are required to constitute a series.

**17.3** Penalties for violations of the Notice of Race, Sailing Instructions and the Racing Rules of Sailing, which are not a Part 2 or Part 3 infringement, are at the discretion of the Jury and may include disqualification.

**17.5** Provisional scores will be posted on the Notice Board at CRYC.

### **18 Safety Regulations, Retiring:**

**18.1** Each owner/skipper shall familiarize and share with their crew the safety protocol and first-aid notice found in the skipper bag.

**18.2** Boats in need of assistance from the RC will wave an extended arm in the direction of any RC boat or call on VHF 71 (see SI 23.1).

**18.3** Boats retiring from racing will notify a RC boat or, if not practical, inform the front desk at Coral Reef Yacht Club.

### **19 Replacement of Crew or Equipment:**

**19.1** A change of helmsman is not permitted.

**19.2** Substitution of crew will not be allowed without prior written approval of the Jury. Once a crewmember has changed, the original crew may not return. There shall be no crew change on the final day of racing.

### **20 Team and Private Support Boats:**

**20.1** Coach boats and private spectator boats are expected to monitor VHF 71 and render assistance to a boat in danger when requested by the boat, or at the request of the RC or Jury.

**20.2** Team leaders, coaches and other Support Persons shall stay 100 meters outside areas where boats are racing from the time of the Warning Signal until all boats have finished racing.

**20.3** A yacht shall receive no outside assistance from Support Persons or otherwise once she has left the dock for the day until the finish of the last race of the day, except in the case of emergency and/or towing supplied by the organizer and available to all participants

**20.4** The penalty for breaking SI 20.1, 20.2 or 20.3 will be at the discretion of the Jury up to and including disqualification of all boats associated with the team or private Support Persons.

### **21 Haul Out – Berthing:**

**21.1** There are no haul out or berthing restrictions.



## **22 US Sailing Prescriptions That Apply:**

### **RRS 61.4: Fees for Protests and Requests for Redress**

US Sailing prescribes that no fees shall be charged for protests or requests for redress.

### **RRS 67: DAMAGES**

US Sailing prescribes that:

- a. A boat that retires from a race or accepts a penalty does not, by that action alone, admit liability for damages.
- b. A protest committee shall find facts and make decisions only in compliance with the rules. No protest committee or US Sailing appeal authority shall adjudicate any claim for damages. Such a claim is subject to the jurisdiction of the courts.
- c. A basic purpose of the rules is to prevent contact between boats. By participating in an event governed by these rules, a boat agrees that responsibility for damages arising from any breach of the rules shall be based on fault as determined by application of the rules, and that she shall not be governed by the legal doctrine of 'assumption of risk' for monetary damages resulting from contact with other boats.

### **RRS 76.1: Exclusions Of Boats Or Competitors**

US Sailing prescribes that an organizing authority or race committee shall not reject or cancel the entry of a boat or exclude a competitor eligible under the Notice of Race and Sailing Instructions for an arbitrary or capricious reason or for reason of race, color, religion, national origin, gender, sexual orientation, or age.

## **23 Radio Communications:**

**23.1** ISCYRA 31.2.6, Electronic Equipment, is amended to allow VHF radios to be carried on all boats for the sole purpose to listen to the actions of the RC and to transmit in the event of an emergency.

**23.2** In the event of an individual recall, bow numbers or sail numbers of a yacht or yachts which are identified as OCS may be announced on VHF 71. Failure of a yacht to hear a recall notification, the timing and order of such hails or the length of time it takes to make a notification on the VHF radio will not be grounds for redress. This changes RRS 60.1(b) and 62.

## **24 Prizes:**

**24.1** A prize for the first place boat in the series for the Masters Division (skippers age 50 through 59 before the start of the first race);

**24.2** A prize for the first place boat in the series for the Grand Masters Division (skippers age 60 and above before the start of the first race);

**24.3** A prize for the first place boat in the series for the Exalted Grand Master (skippers age 70 and above before the start of the first race)

**24.4** Competitors in the Master's Division and Grand Masters Division will also compete for series prizes;

**24.5** Prizes for the first, second, third, fourth and fifth place boats in the series; and,

**24.6** The perpetual Bacardi Cup Trophy for the first place skipper and the Tito Bacardi Cup for the first place crew in the series.



**24.7** The Tammy Rubin-Rice Trophy awarded to the highest placing team in Bacardi Cup who did not win an award.

**25 Trash Disposal, Clothing and Extra Sails:**

**25.1** Boats shall not put trash in the water. Trash may be placed aboard support and RC boats.

**25.2** The race committee will not accept items of clothing or sails.

**26 Mooring Field**

**26.1** It's prohibited to cross the mooring field on your way to and from the racecourse as per the hereunder City Ordinance. Be aware that Marine Patrol will be on the lookout and could impose citations!

**Sec. 50-408. Non-licensee vessels prohibited from entering mooring field.**

Entry into mooring field areas is prohibited, except by those vessels and their dinghies assigned by the harbormaster to a mooring, dinghies visiting those vessels assigned to moorings, facility staff or other authorized work vessels, and enforcement vessels. (*Ord. No. 12992, § 2, 5-8-08*)

**27. Star Sailor League (SSL)**

**27.1** SSL will be handing out a bib for every sailor which is not mandatory to wear, but OA would appreciate if you do.

**27.2** SSL will be handing out a GPS tracking device for a live coverage of the event. This device will need to be picked up at CRYC by the crane and will need to be returned everyday immediately after racing for charging purposes. This is a requirement.

**28 Disclaimer of Liability:**

**28.1** Sailing is an activity that carries with it an inherent risk of damage and injury. Competitors participate in this regatta entirely at their own risk and are reminded to pay special attention to RRS 4, Decision to Race. The race organizers, including the OA, CRYC, Race Committee, Protest Committee, sponsors, volunteers, or any other affiliated organization or official, will not be responsible for damage to any boat or other property or the injury to any competitor, including death, sustained as a result of practice for or participation in this event on the water or ashore. By participating in this event, each competitor agrees to release the race organizers from any and all liability associated with such competitor's participation in this event to the fullest extent permitted by law. Rule 82, a US Sailing Prescription, will not apply to the event.



MARCH 5-11, 2017



March 5 – 11, 2017

## J/70 Class Sailing Instructions

### 1 RULES

- 1.1 The regatta will be governed by the rules as defined in *The Racing Rules of Sailing* (RRS).
- 1.2 The following prescriptions of US Sailing shall apply: 61.4, 67, and 76.1.

### 2 NOTICES TO COMPETITORS

- 2.1 Notices to competitors will be posted on the regatta notice board located at Biscayne Bay Yacht Club.
- 2.2 The race committee will use VHF channel 72 to communicate with competitors on the water. Failure to hear any broadcasts shall not be grounds for redress.

### 3 CHANGES IN SAILING INSTRUCTIONS

Any changes will be posted before 0800 on the day it will take effect, except that any change in the schedule of races will be posted before 2000 the day before the change is to take effect.

### 4 SIGNALS MADE ASHORE

- 4.1 Signals made ashore will be displayed from the flagpole located at Biscayne Bay Yacht Club.
- 4.2 When flag AP is displayed ashore, '1 minute' is replaced by 'not less than 45 minutes' in the race signal.

### 5 CLASS FLAG

Class flags will be a white flag with the class insignia.

### 6 SCHEDULE

Thu, Mar 5 – Sat, Mar 7

- 1055 First Warning, subsequent races to follow.
- No warning after 1400 on Saturday.

### 7 THE COURSES

- 7.1 The diagrams and descriptions in Attachment I show the courses, including the approximate angles between legs and the order in which marks are to be passed.
- 7.2 If only one leeward mark is present it shall be rounded to port.
- 7.3 The course identifier, approximate magnetic bearing and distance in nautical miles to the first mark will be

displayed from the race committee signal boat prior to the warning signal for each race.

An example is shown below:

5	Five legs, finishing to weather
270	Approx magnetic bearing to weather mark
1.0	1.0 nm to weather mark

### 8 MARKS

- 8.1 The windward mark will be a white cylinder with a small orange offset mark. The leeward marks will be red with Bacardi logo.
- 8.2 New marks, as provided in SI 11, will be orange cylinders.

### 9 THE START

- 9.1 The starting line will be between a staff displaying an orange flag on the race committee signal boat at the starboard end and either (a) a staff displaying an orange flag on the race committee pin boat, or (b) a yellow tetrahedron.
- 9.2 The Race Committee signal boat may be protected by a nearby inflatable limit mark, which shall rank as a starting mark. Boats shall not pass between the limit mark and the nearby signal boat when approaching the line to start. The area between the limit mark and the signal boat does not rank as an obstruction for purposes of RULES 19 and 20.
- 9.3 A boat starting later than ten (10) minutes after her starting signal will be scored Did Not Start (DNS). This changes Rule 29.1, where the word "four" is changed to "10", and Rule A4.1.

### 10 RECALLS

- 10.1 When an individual recall is signaled, the race committee will attempt to hail OCS boats on VHF.
- 10.2 The timing and order of such hails or the failure of a boat to hear the hail shall not be grounds for redress, changing RRS 62.

### 11 CHANGE OF THE NEXT LEG OF THE COURSE

To change the next leg, the race committee will lay a new mark (or move the finishing line) and remove the old mark as soon as practicable. When in a subsequent change a new mark is replaced, it will be replaced by an original mark.





MARCH 5-11, 2017



## 12 THE FINISH

The finishing line will be between staffs displaying orange flags on Race Committee vessels or between a staff displaying an orange flag on a Race Committee vessel and a nearby mark.

## 13 TIME LIMITS

- 13.1 If no boat has passed Mark 1 within 45 minutes, the race will be abandoned.
- 13.2 The time limit for the first boat to sail the course and finish is 90 minutes.
- 13.3 Boats still racing more than 15 minutes after the first boat sails the course and finishes will be scored TLE (Time Limit Expired) without a hearing. This changes RRS 35, A5, and A11.

## 14 PROTESTS AND REQUESTS FOR REDRESS

- 14.1 Protest forms are available in the Jury Room located at Coral Reef Yacht Club and shall be delivered there within the protest time limit which is 60 minutes after the race committee finish boat docks after the last race of the day.
- 14.2 The race committee will post a list of penalties being assigned by the race committee prior to the end of protest time limit. The deadline for requesting redress based on these scores will be either 30 minutes after posting of the penalty notice or the protest time limit, whichever is later. This changes RRS 62.2.
- 14.3 Notices will be posted within 30 minutes of the protest time limit to inform competitors of hearings and arbitration hearings in which they are parties or named as witnesses. Hearings will be held in the Jury Room, beginning as soon as practical.
- 14.4 On the last day of the regatta a request for reopening a hearing shall be delivered (a) within the protest time limit if the party requesting reopening was informed of the decision on the previous day; (b) no later than 30 minutes after the party requesting reopening was informed of the decision on that day. This changes RRS 66.

## 15 SCORING

- 15.1 Eleven races are scheduled. Three races are required to be completed to constitute a regatta.
- 15.2 Each boat's regatta score shall be the total of her race scores excluding her worst score, except that if less than five races are sailed, each boat's series score shall be the total of her race scores.
- 15.3 Boats scored TLE will be scored points equal to the number of boats finishing within the time limit plus two points. This changes RRS 35, A4.2 and A11.

## 16 SAFETY

- 16.1 Each owner/skipper is requested to familiarize and share with crew the safety and first-aid notice found in the skipper bag.
- 16.2 Prior to the warning signal for the first race of each day in which it intends to compete, each boat is requested to check in by VHF or sail by the race committee signal boat and hail its sail number.
- 16.3 A boat retiring from a race or leaving the racing area early shall promptly notify the race committee either by hail, over VHF, or by telephone to the Regatta Chairman at 305-915-1438.

## 17 CREW

- 17.1 No changes to crew shall be allowed except with written approval of the Race Committee.
- 17.2 Requests for replacement of crew and any reply shall be posted on the regatta notice board.
- 17.3 The same number of persons shall sail throughout the event.

## 18 RADIO EQUIPMENT

A boat shall neither make radio or other data transmissions while racing nor receive radio or mobile phone communication not available to all boats, except for emergencies.

## 19 DISCLAIMER OF LIABILITY

Sailing is an activity that carries with it an inherent risk of damage and injury. Competitors participate in this regatta entirely at their own risk and are reminded to pay special attention to RRS 4, Decision to Race. The race organizers, including the OA, CRYC, Race Committee, Protest Committee, sponsors, volunteers, or any other affiliated organization or official, will not be responsible for damage to any boat or other property or the injury to any competitor, including death, sustained as a result of practice for or participation in this event on the water or ashore. By participating in this event, each competitor agrees to release the race organizers from any and all liability associated with such competitor's participation in this event to the fullest extent permitted by law. Rule 82 will not apply to the event in accordance with US Sailing regulations.

Attachment I: COURSE DIAGRAMS

Course 4		Course 5
<p>Start, 1 (port), 1a (port), between 2S and 2P, 1(port), 1a (port), finish</p>		<p>Start, 1 (port), 1a (port), between 2S and 2P, 1(port), 1a (port), between 2S and 2P, finish</p>



# MIAMI SAILING WEEK



March 9 – 11, 2017

## Viper 640 and VX One Classes Sailing Instructions

### 1 RULES

- 1.1 The regatta will be governed by the rules as defined in *The Racing Rules of Sailing* (RRS).
- 1.2 Class specific *rule* changes and updates are shown in Attachment III.

### 2 NOTICES TO COMPETITORS

- 2.1 Notices to competitors will be posted on the regatta notice board located at Coral Reef Yacht Club.
- 2.2 Announcements will be made to competitors using VHF Channel 73 on shore and on the water prior to, during and after racing. These announcements are courtesy only and failure to make or hear the announcements shall not be grounds for redress.

### 3 CHANGES IN SAILING INSTRUCTIONS

Any changes will be posted before 0800 on the day it will take effect, except that any change in the schedule of races will be posted before 2000 the day before the change is to take effect.

### 4 SIGNALS MADE ASHORE

- 4.1 Signals made ashore will be displayed from the flagpole located at the US Sailing Center. Signals may also be displayed from the flagpole at Shake-A-Leg but these are unofficial - timing or lack of signals at Shake-A-Leg shall not be grounds for redress.
- 4.2 When flag AP is displayed ashore, '1 minute' is replaced by 'not less than 45 minutes' in the race signal.

### 5 SCHEDULE

Thu, Mar 9 – Sat, Mar 11

1055 First Warning, subsequent races to follow.  
No warning after 1400 on Saturday.

### 6 RACING AREAS

Shown on laminated attachment found in skipper bag.

### 7 CLASS FLAG

Class flags will be a white flag with the class insignia.

### 8 THE COURSES

- 8.1 The diagrams and descriptions in Attachment I show the courses, including the approximate angles between legs and the order in which marks are to be passed.
- 8.2 If only one leeward mark is present it shall be rounded to port.
- 8.3 The course identifier, approximate magnetic bearing and distance in nautical miles to the first mark will be displayed from the race committee signal boat prior to the warning signal for each race.

An example is shown below:

5	Five legs, finishing to windward
270	Approx magnetic bearing to windward mark
1.0	1.0 nm to windward mark

### 9 MARKS

- 9.1 The windward and leeward marks will be red with EFG logo. Start and finish marks will be race committee vessels. The finish mark will be a yellow inflatable. The offset mark will be a small orange ball.
- 9.2 New marks, as provided in SI 12, will be orange cylinders.

### 10 THE START

The starting line will be between a staff displaying an orange flag on the race committee signal boat at the starboard end and either (a) the course side of the starting mark or (b) a staff displaying an orange flag on a boat at the port end.

### 11 RECALLS

- 11.1 When an individual recall is signaled, the race committee will attempt to hail OCS boats on VHF.
- 11.2 The timing and order of such hails or the failure of a boat to hear the hail shall not be grounds for redress, changing RRS 62.



# MIAMI SAILING WEEK



## 12 CHANGE OF THE NEXT LEG OF THE COURSE

To change the next leg, the race committee will:

- lay a new mark and remove the old mark as soon as practicable or
- move the finishing line or
- move the gate.

When in a subsequent change a new mark is replaced, it will be replaced by an original mark.

## 13 THE FINISH

The finishing line will be between a staff displaying an orange flag on a race committee boat and the course side of the finishing mark.

## 14 TIME LIMITS

- The time limit for the first boat to sail the course and finish is 90 minutes.
- Boats still racing more than 30 minutes after the first boat sails the course and finishes will be scored TLE (Time Limit Expired) without a hearing. This changes RRS 35, A5, and A11.

## 15 PROTESTS AND REQUESTS FOR REDRESS

- Protest forms are available in the Jury Room located at Coral Reef Yacht Club and shall be delivered there within the protest time limit which is 60 minutes after the race committee finish boat docks after the last race of the day.
- The race committee will post a list of penalties being assigned by the race committee prior to the end of protest time limit. The deadline for requesting redress based on these scores will be either 30 minutes after posting of the penalty notice or the protest time limit, whichever is later. This changes RRS 62.2.
- Notices will be posted within 30 minutes of the protest time limit to inform competitors of hearings and arbitration hearings in which they are parties or named as witnesses. Hearings will be held in the Jury Room, beginning as soon as practical.

## 16 SCORING

- Eleven races are scheduled. Three races are required to be completed to constitute a regatta.
- Each boat's regatta score shall be the total of her race scores excluding her worst score, except that if less than six races are sailed, each boat's series score shall be the total of her race scores.
- Boats scored TLE will be scored points equal to the number of boats finishing within the time limit plus two points. This changes RRS 35, A4.2 and A11.

## 17 SAFETY

- Each owner/skipper is requested to familiarize and share with crew the safety and first-aid notice found in the skipper bag.
- Prior to the warning signal for the first race of each day in which it intends to compete, each boat is requested to check in by VHF or sail by the race committee signal boat and hail its sail number.
- A boat retiring from a race or leaving the racing area early shall promptly notify the race committee either by hail, over VHF, or by telephone to the Event Chairman at 305-915-1438.

## 18 CREW

- No changes to crew shall be allowed except with written approval of the Race Committee.
- Requests for replacement of crew and any reply shall be posted on the regatta notice board.
- The same number of persons shall sail throughout the event.

## 19 RADIO EQUIPMENT

A boat shall neither make radio or other data transmissions while racing nor receive radio or mobile phone communication not available to all boats, except for emergencies.

## 20 DISCLAIMER OF LIABILITY

Sailing is an activity that carries with it an inherent risk of damage and injury. Competitors participate in this regatta entirely at their own risk and are reminded to pay special attention to RRS 4, Decision to Race. The race organizers, including the OA, CRYC, Race Committee, Protest Committee, sponsors, volunteers, or any other affiliated organization or official, will not be responsible for damage to any boat or other property or the injury to any competitor, including death, sustained as a result of practice for or participation in this event on the water or ashore. By participating in this event, each competitor agrees to release the race organizers from any and all liability associated with such competitor's participation in this event to the fullest extent permitted by law.

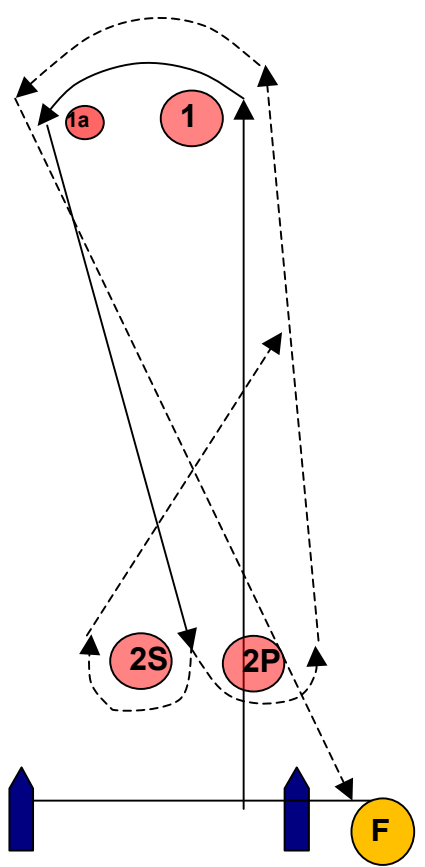
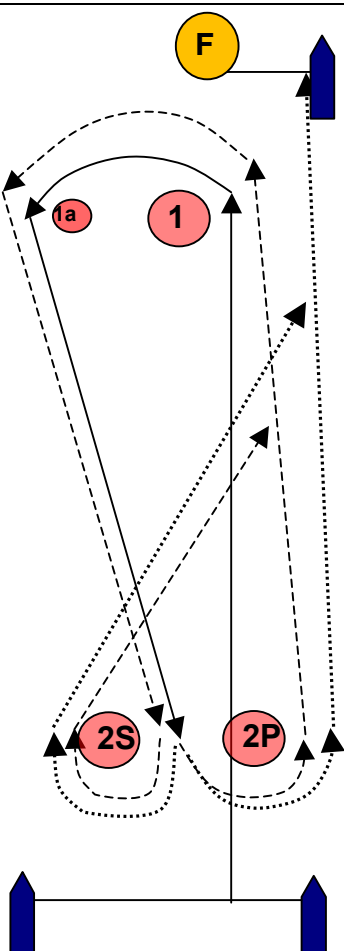


**MIAMI SAILING WEEK**

EFG



### Attachment I: COURSE DIAGRAMS

Course 4		Course 5
		
Start, 1 (port), 1a (port), between 2S and 2P, 1(port), 1a (port), finish		Start, 1 (port), 1a (port), between 2S and 2P, 1(port), 1a (port), between 2S and 2P, finish



## Attachment II: Class Specific *Rule* Changes and Updates

### 1 The following *rules* are changed for Vipers:

- 1.1 RRS 44.1 is changed so that a Two-Turn Penalty is replaced by a One-Turn Penalty except for breaches of RRS 18.

### 2 The following *rules* are changed for VX One:

- 2.1 RRS 42.2 (a) is changed as follows: “Unlimited trimming and easing of the Asymmetrical Spinnaker to promote a plane shall be permitted.”
- 2.2 RRS 44.1 is changed so that a Two-Turn Penalty is replaced by a One-Turn Penalty.
- 2.3 RRS 50.4 shall not apply.
- 2.4 The ERS Part I – Use of Equipment shall apply.
- 2.5 With permission of the VXCA, Class Rule H.4.3 is changed to state – “Use of VXCA bow numbers which reference the hull and sail number are REQUIRED for this event.”



# MIAMI SAILING WEEK



Coconut Grove, Florida  
March 9 – March 11, 2017

## SAILING INSTRUCTIONS A-Cat, Melges 24, Flying Tiger 7.5

### 1. RULES

- 1.1 The regatta will be governed by the rules as defined in *The Racing Rules of Sailing*.
- 1.2 The following prescriptions of US Sailing shall apply: 61.4, 67 and 76.1.

### 2. NOTICES TO COMPETITORS

- 2.1 Notices to competitors will be posted on the official notice board located at the Hospitality Village in Regatta Park.

### 3. CHANGES TO SAILING INSTRUCTIONS

- 3.1 Any changes will be posted before 0800 on the day it will take effect, except any change in the schedule of races will be posted by 2000 on the day before it will take effect.

### 4. SIGNALS MADE ASHORE

- 4.1 Signals made ashore will be displayed from the flag pole located at Regatta Park.
- 4.2 When Flag AP is displayed ashore, '1 minute' is replaced by 'not less than 60 minutes' in the race signal.

### 5. SCHEDULE OF RACES

- 5.1 A competitors meeting will be held at Regatta Park on Wednesday, March 8, 2017 at 1730 hours near the flag pole
- 5.2 First warning March 9, 10 and 11 will be at 1055 daily.
- 5.3 There will be no warning after 1400 on Saturday, March 11, 2017 except that after the initial warning, any warning that follows one or more General Recalls may occur after 1400.
- 5.4 The race committee will signal its intent to conduct another race by displaying Code Flag 'R' at the finish of a race without a sound.
- 5.5 The starting order for each class shall be: Melges 1<sup>st</sup> start, A-Cat second start, Flying Tiger 75 third start.
- 5.6 After the first race each day finishes, the race committee may start a class out of sequence while others are still racing.

### 6. RACE AREA

- 6.1 The following classes will sail on Delta Course: A-Cat, Melges 24 and Flying Tiger 7.5. See laminated attachment found in skipper bag.

### 7. CLASS FLAGS

- 7.1 Class flag for Flying Tiger 7.5 is: Code Flag 'F'
- 7.2 Class flag for Melges 24 is: Melges 24 insignia on a white flag
- 7.3 Class flag for A-Cat is: A-Cat insignia on a white flag

### 8. THE COURSES

- 8.1 No later than the warning signal, the race committee will designate the course by displaying the course identifier, approximate magnetic bearing and distance to the first mark. See example below:

4
180
1.0

- 8.2 The course diagrams are shown in Attachment I.

**9. MARKS**

- 9.1 Windward mark will be orange inflatable with an orange inflatable off set to be rounded to port.
- 9.2 Leeward gate will be red inflatable marks. If one of the gate mark is missing, boats shall round the existing leeward mark to port.

**10. THE START**

- 10.1 Races will be started by using RRS 26.
- 10.2 The starting line will be between a staff displaying an orange flag on the race committee vessel and a yellow inflatable mark on the port end of the line.
- 10.3 An inflatable buoy may be tethered to the stern of the committee boat and will function as an extension of the race committee vessel. Boats shall not pass between the race committee vessel and the buoy tethered to it.
- 10.4 A boat starting later than four (4) minutes after her starting signal will be scored *DID NOT START* (DNS) without a hearing. This changes RR A4.1.

**11. RECALLS**

- 11.1 When an individual recall is signaled, the race committee will attempt to notify the OCS boat via VHF by calling sail number or any identifier of the boat. Failure of a boat to see or hear the recall notification, and the timing and order of such hails or the length of time it takes to make notification on the race committee VHF channel will not be grounds for protest or redress. (This changes RRS 62.1 (a)).

**12. CHANGE OF THE NEXT LEG OF THE COURSE**

- 12.1 RRS 33 will apply

**13. THE FINISH**

- 13.1 The finishing line will be between a staff displaying an orange flag on the race committee vessel and a nearby yellow inflatable mark.

**14. TIME LIMIT**

- 14.1 Any race in which no boat in a class, rounds the first windward mark within 45 minutes, or finishes within two hours of the start shall be abandoned.
- 14.2 All boats not finishing within 30 minutes of the finish time of the first boat to finish a race, shall be scored "Time Limit Expired" (TLE). A TLE score for all boats still competing when the time limit expires shall be one more point than the number of boats that have finished within the time limit. (This changes Rule 35, Appendices A4.1, A4.2 and All).

**15 PENALTY SYSTEM**

- 15.1 RRS 44.1 is changed so that a Two-Turn-Penalty is replace with a One-Turn-Penalty except for breaches of RRS18.
- 15.2 RRS 44.3 (a) and (b) will apply.
- 15.3 Alternatively, a boat may take a Scoring Penalty in compliance with Rule 44.3(c) for breaking a rule of Part 2 prior to a jury hearing by acknowledging in writing breaking a rule. If approved by the jury, the penalty shall be 20% of the number of boats entered in that regatta (rounding 0.5 upward), but shall not be less than 5 places not worse than DNF.

**16 PROTESTS AND REQUEST FOR REDRESS**

- 16.1 Protest forms will be obtained from the reception desk at Coral Reef Yacht Club. Protests and request for redress will be delivered to the Protest Desk within sixty (60) minutes after the race committee vessel docks.
- 16.2 Preliminary scores and actions by the race committee will be posted within sixty (60) minutes after the race committee vessel docks.



16.3 Scoring inquiry forms will be available at the reception desk at Coral Reef Yacht Club and must be delivered to the Protest Desk within sixty (60) minutes after the race committee vessel docks. The representative of a yacht with a scoring inquiry shall be the owner of the boat or the helmsman.

16.4 On the last day of the regatta, a request for re-opening a hearing shall be delivered: (a) within the protest time limit if the party requesting re-opening was informed of the decision on the previous day; (b) no later than 30 minutes after the party requesting re-opening was informed of the decision on that day.

16.5 On the last day of the regatta a request for redress based on a protest committee decision shall be delivered no later than 30 minutes after the decision was posted. This changes RRS 62.2

16.6 All decisions by the International Jury are final.

## **17 SCORING**

17.1 There are 9 races scheduled and one race constitutes a series.

17.2 The Low Point Scoring System shall apply with the following exception:

17.3 When fewer than 6 races have been completed, a boat's score shall be the total of her race scores. When 6 or more races have been completed, a boat's worst score will be the total of her race scores excluding her worst score.

## **18 SAFETY**

18.1 Each boat is expected to carry a VHF and monitor channel 69.

18.2 A safety and first-aid notice has been provided to each skipper; it is the responsibility of the skipper to be familiar with it and to review it with his/her crew.

18.3 Each boat is required to check in prior to the first warning each day by sailing past the stern of the race committee vessel on starboard tack.

18.4 Boats may also check in using VHF 69.

18.5 A boat retiring from a race or leave the racing area shall notify a race committee vessel on VHF 69. Notification can be made to the PRO: Sharon Bourke via cell phone: 305-342-2528 or Regatta Chairman: Mark Pincus: 305-915-1438.

## **19 REPLACEMENT OF CREW/EQUIPMENT**

19.1 Substitution of crew shall not be permitted without prior written approval of the race committee.

19.2 Substitution of damaged or lost equipment will not be permitted without prior written approval of the race committee.

## **20 LAUNCHING AND HAUL OUT REQUIREMENTS**

20.1 Flying Tiger: all boats will be launched by 1700 hours on March 8, 2017 and remain in the water at Shake-A-Leg for the duration of the event. Launching and trailer storage is at Regatta Park in Coconut Grove. All boats/trailers are required to leave Regatta Park by Sunday March 12, 2017

20.2 Melges 24: all boats will be launched by 1700 hours on March 8, 2017 and remain in the water at Dinner Key Marina for the duration of the event. Launching can be done from Shake-A-Leg or USSC in Coconut Grove. All boats must stop at the Registration Desk to pay and retrieve permits for trailer storage. All boats must leave Regatta Park by Sunday March 12, 2017.

20.3 A-Cats: Daily launching is available from Seminole Ramp in Regatta Park. All boats shall come out of the water after racing daily unless granted prior written permission by the race chairman. Storage will be at Regatta Park. All competitors are required to stop by the Registration Desk to retrieve permits. All boats must leave Regatta Park by Sunday March 12, 2017

## **21 SUPPORT BOATS**

21.1 Team leaders, coaches and other support persons shall stay outside areas where boats are racing from the time of the preparatory signal for the first class to start until all boats have finished, retired or race committee signals a postponement, general recall or abandonment. Failure to comply with this instruction may result in a discretionary penalty by the jury.

21.2 Trash may be placed in support or official boats.



## **22 DIVING AND PLASTIC POOLS**

22.1 Underwater breathing apparatus and plastic pools or their equivalent shall not be used around keelboats between the preparatory signal of the first race and the end of the regatta. Failure to comply with this instruction may result in a discretionary penalty by the jury.

## **23 RADIO COMMUNICATIONS**

23.1 Except in an emergency, a boat this is racing shall not make voice or data transmissions and shall not receive voice or data transmissions that is not available to all boats. Failure to comply with this instruction may result in a discretionary penalty by the jury.

## **24 PRIZES**

24.1 Prizes will be given for 1<sup>st</sup>, 2<sup>nd</sup> and 3<sup>rd</sup> place for each class.

## **25 DISCLAIMER OF LIABILITY**

25.1 Competitors participate entirely at their own risk. See RRS 4, Decision to Race. The Organizing Authority, the race committee, international jury, sponsors or any other affiliated authority will not be responsible for damage to any boat or other property or the injury of any competitor including death, sustained because of practice for, or participation in this event on the water or ashore. By participating in this event, each competitor agrees to release the race organizers from all liability associated with the competitor's participation in this event to the fullest extent permitted by law.

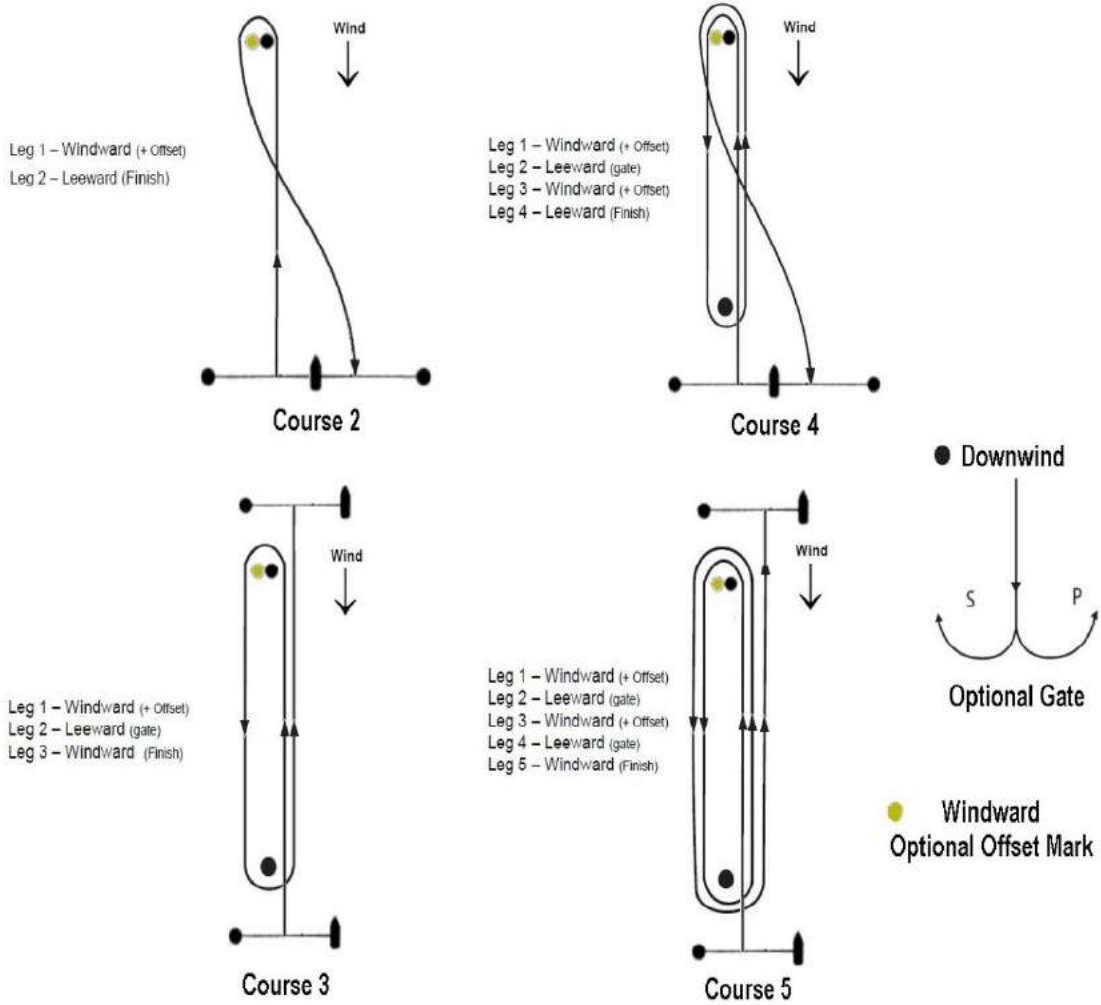
Sharon Bourke PRO

*P. Sharon Bourke*

February 11, 2017

Attachment I

Course Diagrams – Flying Tiger 7.5, Melges 24, A-Cat





## Addendum for Flying Tiger Division

### **1 ELIGIBILITY AND ENTRY**

#### **1.2 Crew Requirements:**

a) Maximum total of 6 crew, 1125lbs. The North U Clinic coach's weight, if on board, does not count against the weight limit.

#### **1.3 Eligible teams may enter by completing registration with 1D Sailing and must complete all 1D Sailing waivers as well as all required forms and waivers for the Organizing Authority.**

#### **1.4 The following restrictions on the number of boats apply: A maximum of 8 teams may apply to participate. National 1DSailing Academy reserves the right to accept or deny any or all applications.**

### **2 BOATS**

#### **2.1 The event will be sailed in Flying Tiger 7.5s provided by National One Design Sailing Academy.**

#### **2.2 Boats will be provided for approved competitors, who shall not modify them or cause them to be modified in any way.**

#### **2.3 All equipment provided with the boat for sailing purposes shall be in the boat while afloat.**

#### **2.4 The penalty for not complying with one of the above instructions will be disqualification from all races sailed in which the instruction was broken.**

#### **2.5 Competitors shall report any damage or loss of equipment, however slight, to the organizing authority's representative immediately after securing the boat ashore. The penalty for breaking this instruction, unless the protest committee is satisfied that the competitor made a determined effort to comply, will be disqualification from the race most recently sailed.**

#### **2.6 Boat allocations will be decided by a drawing of boat numbers at the Competitors Meeting.**

### **3 FEES**

#### **3.1 Required registration fee is determined by 1D Sailing and must be paid in full prior to the event. National One Design is responsible for paying regatta entry fees.**

#### **3.2 Teams must provide a \$1,500.00 refundable damage deposit at registration. An outline of damage costs will be provided at the event.**

### **4 SCHEDULE**

#### **4.1 Boats will be available from 9:00am March 7<sup>th</sup>, 2017 until the completion of the regatta.**



## **5 BERTHING**

Boats shall be kept in their assigned places while they are in the harbour.

## **6 LIABILITY**

Competitors participate in the regatta entirely at their own risk. National One Design Sailing Academy may, at their sole discretion, cancel racing at any given time should they so decide. Neither National One Design Sailing Academy nor the organizing authority will accept any liability for material damage or personal injury or death sustained in conjunction with or prior to, during, or after the regatta.

## **7 FLYING TIGER BOAT HANDLING**

No equipment provided with the boat (at time of inventory inspection) shall be removed, even if found useless.

## **1 GENERAL**

1.1 While all reasonable steps are taken to equalize the boats variations will not be grounds for redress. This changes RRS 62.

1.2 Boats will be assigned for the event by National One Design Sailing Academy.

1.3 If a boat is unable to complete or sail in one or more race(s) due to equipment failure that is through no fault of their own, redress may be granted by the PC without requiring a hearing. Every reasonable attempt will be made by the OA to repair the boat or complete a boat exchange if available.

## **2 SAIL COMBINATION**

The sail combination to be used will be signalled from the RC boat before the warning signal, or during the race. In that case, a race committee boat will be stationed close to a mark, signalling the new sail combination with repetitive sounds.

These signals shall have the following meaning:

- |   |          |       |        |             |          |  |
|---|----------|-------|--------|-------------|----------|--|
| - | No       | Flag: | Sail   | combination | is       | free                                   |
| - | Constant | wind  | speeds | over        | 18K-Flag | W: Full main with jib and no spinnaker |
| - | Constant | wind  | speeds | over        | 24K-Flag | V: Reef main with jib and no spinnaker |

## **3 INVENTORIES**

The distribution of boats between crews will be made by draw at time of registration. After having signed the inventories, skippers can lodge written requests about the boat's condition until Wed. March 8<sup>th</sup> up to 17:00.

**4 PROHIBITED ITEMS and ACTIONS** - Except in an emergency or in order to prevent damage or injury, or when directed by a member of the OA otherwise, the following are prohibited:

4.1 Any additions, omissions or alterations to the equipment supplied. No equipment provided with the boat shall be removed, even if found useless.

- 4.2 The use of any equipment for a purpose other than that intended or specifically permitted.
- 4.3 The replacement of any equipment without the agreement of the RC.
- 4.4 Sailing the boat in a manner that it is reasonable to predict, would result in further damage.
- 4.5 Boarding a boat without prior permission.
- 4.6 Taking a boat from its berth or mooring without having paid the required damage deposit or having permission from the RC, or, on race days, while 'AP over H' is displayed ashore.
- 4.7 Hauling out a boat or removing rudder.
- 4.8 Attaching lines to the fabric of spinnakers.
- 4.9 Perforating sails, even to attach tell tales.
- 4.10 Adjusting or altering the tension of standing rigging.
- 4.11 Using a winch to adjust the mainsheet, outhaul, cunningham or vang.
- 4.12 Adjusting lifeline tension.
- 4.13 Omitting or adding any headsail car or turning block before sheeting onto a winch.
- 4.14 Marking directly on the hull, deck or lines with any sort of marker, including pencil.
- 4.15 Use of any tape that leaves a residue.
- 4.16 The use of the shrouds (including any inner shrouds) to facilitate tacking or gybing, or to aid the projection of a crew member outboard.
- 4.17 Having the bowsprit extended, except when in the process of setting, flying or taking down the spinnaker. See SI C5.8 for permitted action on extending the bowsprit.

## **5 PERMITTED ITEMS and ACTIONS**

- 1 A compass may be tied or taped to the hull or spars.
- 2 Wind indicators, including yarn or thread, may be tied or taped anywhere on the boat.
- 5.3 Hull, keel and rudder may be cleaned, but only with water.
- 5.4 Adhesive tape as provided by the OA may be used anywhere above the gunwale.
- 5.5 Basic hand tools may be brought aboard.
- 5.6 Line (elastic or otherwise of 4mm diameter or less) may be brought aboard.
- 5.7 Hiking. While sailing upwind, the crew may position either their torso or legs outside the lifelines but not both. While sailing downwind the crew may position only their legs outside the lifelines. The helmsperson may position his/her torso outside of the lifeline while driving. This changes RRS 49.2.
- 5.8 Approaching a windward mark without the spinnaker set, the bowsprit shall not be extended until the bow of the boat has passed the mark. This is defined by extending to windward, the line formed by the windward and leeward marks. An offset mark is not considered as a windward mark in this case. The bowsprit shall be fully retracted at the first reasonable opportunity after taking the spinnaker down.

## **C.6 MANDATORY ITEMS and ACTIONS**

- 6.1 Motor will be stored below while racing as instructed by the OA:
  - i. Shaft must be secured / lashed in place within the cockpit locker
  - ii. Battery and tiller to be secured in the blue bin located below within the v-berth locker



# MIAMI SAILING WEEK



6.2 Competitors shall report any damage or loss of equipment, however slight, to the organizing authority's representative immediately after securing the boat ashore. The penalty for breaking this instruction, unless the protest committee is satisfied that the competitor made a determined effort to comply, will be disqualification from the race most recently sailed.

6.3 At the end of each sailing day:

- i. Folding/rolling bagging and placement of the sails as directed
- ii. Leaving the boat in the same state of cleanliness as when first boarded that day
- iii. PFD's are to be hung over the spinnaker pole
- iv. Returning the VHF & engine battery for charging.

6.4 At the end of the day cleaning the boat, removing all trash, empty the bilge, and removing all tape and marks.

6.5 Any request to alter, in any way, the equipment on a boat shall be in writing and worded to permit a yes/no answer.

## C.7 PENALTY

The penalty for not complying with one of the above instructions C.4 or C.6 will be disqualification from all races sailed in which the instruction was broken.

## PENALTIES FOR DAMAGE RESULTING FROM CONTACT BETWEEN BOATS

This permits the PC along with the OA to decide the additional penalty level when a boat breaks RRS 14. This document explains how damage will be assessed and gives general guidance on the appropriate penalty. When the protest committee has good reasons to do so, it may apply a different penalty. This changes RRS 64.1.

Damage will be divided into 3 levels.

Level	Extent	Effect
Level A - Minor Damage	Does not significantly affect the value, general appearance or normal operation of the boat.	Boat may race without repair although some minor surface work may be required after the event. Repairs should not normally require more than 1 hour of work.
Level B - Damage	Affects the value and/or general appearance of the boat	The damage does not affect the normal operation of the boat in that race but may need some (temporary) work before racing again. Requires more than 1 hour of work but should not normally require more than 3 hours of work.
Level C - Major Damage	The normal operation of the boat is compromised and its structural integrity may be impaired.	The boat will need some repair work before racing again. Requires more than 3 hours of work.